

COMMUNITY SESSION #4

TRANSPORTATION SYSTEM IN U.S

HIGHLY RECOMMENDED FOR:

- FAMILIES
- STUDENTS
- IMMIGRANTS

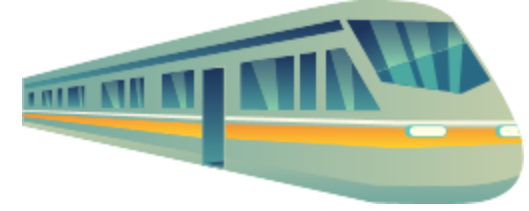


SATURDAY MARCH 29, 2025
TIME: 4:00 PM
VIA: ZOOM
FREE & OPEN TO ALL

KING COUNTY

BY: SHOGOFA AMINI

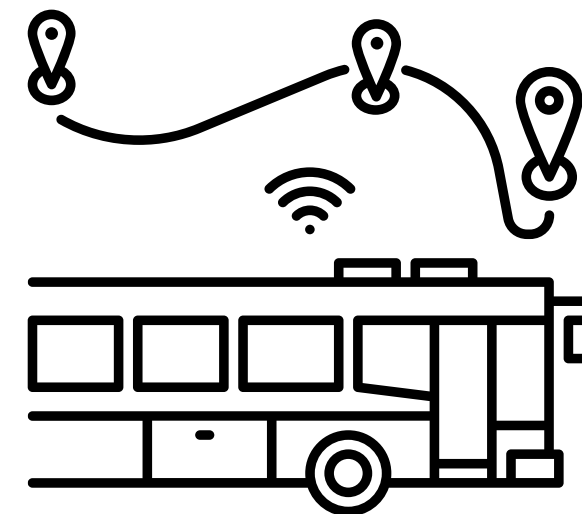




Navigating the U.S. Transportations

Understanding Public and Private Option.

By: Shogofa Amini, MPH





Overview

- Overview of Transportation
- Road Transportation
- Railways and Air Travel
- Other transportation options (Bikes, Scooters, Ferries, and Walking paths)
- Navigating Transportation
- Spotlight: King County, Washington

Road Transportation

1. Private Cars:

- The most common form of transportation.
- Interstate highways for long distances.
- Gas stations available nationwide.

2. Public Buses:

- Local buses serve cities and suburbs
- Greyhound and Megabus offer intercity travel
- You buy tickets online or at the station
- **Amtrak:** For long-distance train travel.
- Connects cities and regions across the U.S.

3. Ride-Share Apps:

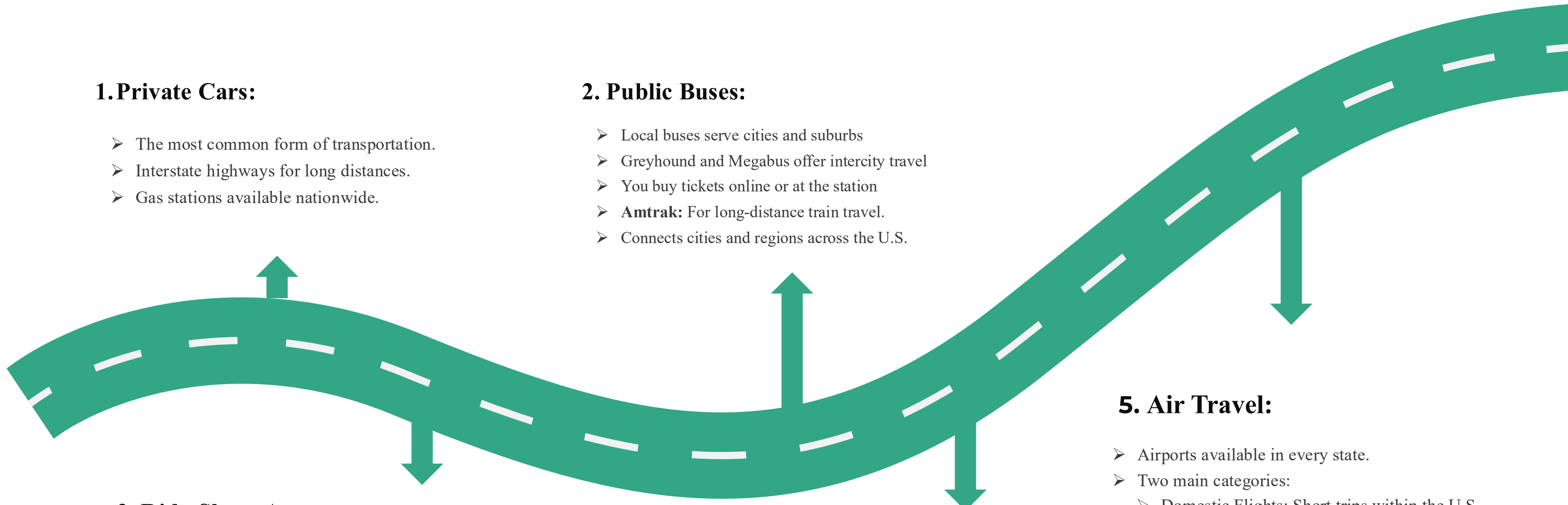
- You can download the app on your phone
- Uber and Lyft are paid rides you pay through an application to get around faster.

4. Railways:

- Subways and commuter Trains: Found in major cities(e.g., NYC, Washington, D.C., Chicago)
- The trains and subways make it easy for daily commuting.
- Light Rail and Streetcars: Urban transit options in cities like Seattle, Portland, and San Francisco.

5. Air Travel:

- Airports available in every state.
- Two main categories:
 - Domestic Flights: Short trips within the U.S.
 - International Flights: Traveling out of the U.S. to other countries.



Other Forms of Transportation

1. Bikes and Scooters:

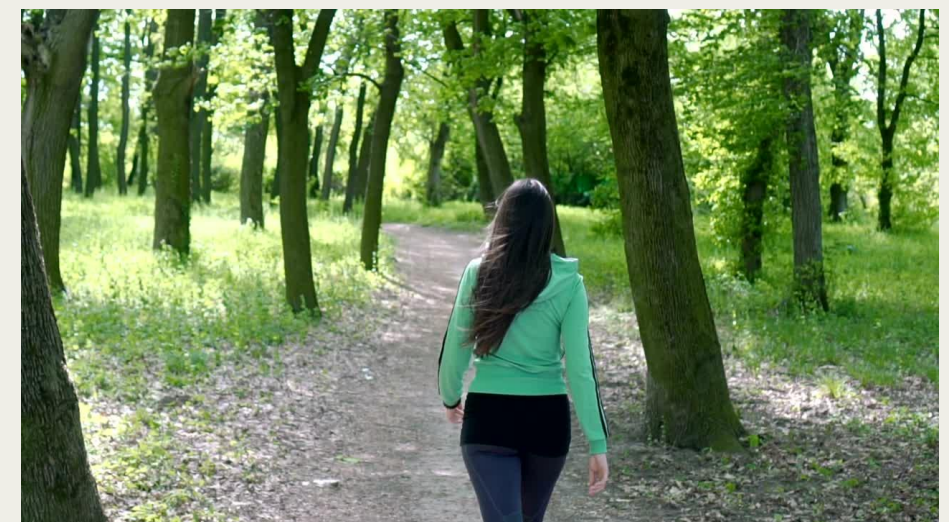
- a. Available for rent in cities (e.g, Lime, Citi Bike).

2. Ferries:

- a. Common in coastal cities (e.g., Seattle, NYC)

3. Walking:

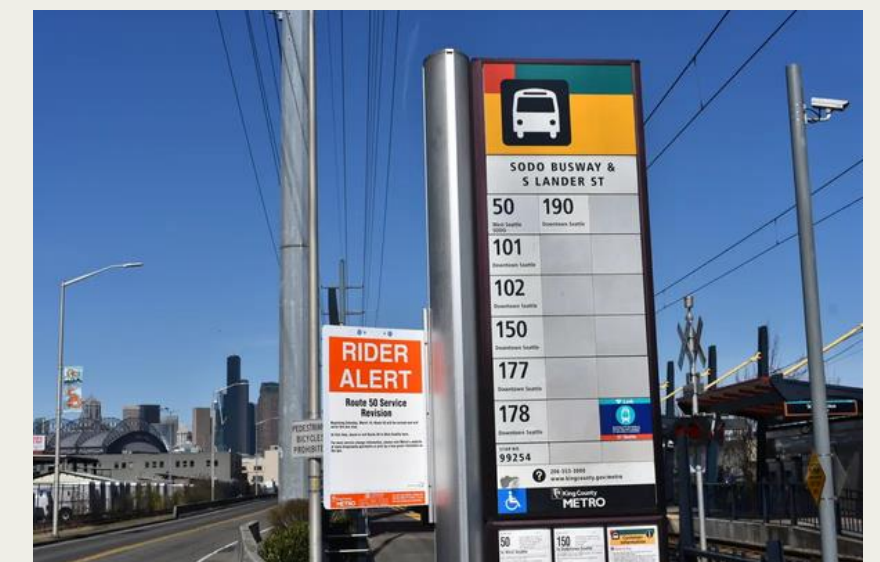
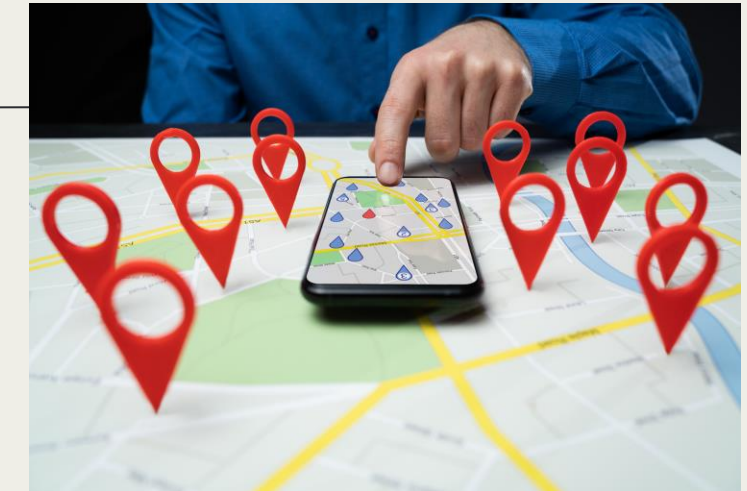
- a. There is a pathway for walking for pedestrians.
- b. There are parks as well for a walk to enjoy nature.



Navigating Transportation

Steps to use Public Transportation:

1. **Research routes** (use Google Maps or transit apps).
2. **Purchase tickets** (Cash, card, mobile apps).
3. **Follow schedules and stops:** Every bus stop has schedules at the train station or the bus station.
4. **Ask for assistance** if you don't understand the schedules.



Overview of King County Transportation

Transportation System in Seattle, Washington (King County)



King County Transportation

1. King County's transportation system is diverse and interconnected.
2. This transportation is managed by King County Metro and Sound Transit.
3. It covers buses, light rail, ferries, commuter trains, bikes, and ride-sharing.



Public Transit in King County

1. King County Metro Bus Services

- Extensive local and regional bus network.
- Over 200 routes connecting Seattle to suburbs and beyond.
- Frequent services during peak hours.



King County Metro Busses Fee:

- Adult (Ages 19–64): \$2.75 per ride
- Senior (65+)/Disabled/Medicare: \$1.00 per ride
- Youth (0–18 years): Free
- Low-Income (ORCA LIFT): \$1.00 per ride

2. Link Light Rail (Sound Transit):

- Operated by Sound Transit
- Connects Sea-Tac Airport to Seattle and Northgate
- Ongoing expansion to neighborhoods like Bellevue and Lynnwood.



Sound Transit Link Light Rail:

- Adult: \$3.00 per ride
- Reduced Fare: \$1.00 per ride
- Youth: Free

3. Sounder Commuter Train:

- Provides weekday service between Seattle, Tacoma, and Everett.
- Primarily used for peak-hour commuters.



Sounder Commuter Train:

- Adults (19–64): \$3.25–\$5.75 per trip, based on distance.
- Low-Income Adults: \$1.00 per trip (ORCA LIFT enrollment required).
- Seniors (65+) & Disabled Riders: \$1.00 per trip (RRFP required).
- Youth (18 & Under): Ride free on all Sound Transit services.

5. Ferries in King County:

- Ferries carry vehicles, bikes, and walk-on passengers.
- Scenic views of Puget Sound and the Olympic Mountains



Ferries in King County Fee:

- Adults (19–64): \$5.75/trip (\$5.00 with ORCA card).
- Low-Income Adults: \$3.75/trip (ORCA LIFT required).
- Seniors & Disabled Riders: \$2.50/trip (RRFP required).
- Youth (18 & Under): Ride free.

6. Metro Flex

- Convenient phone booking with nearby pickups.
- Quick rides with estimated arrival times.
- It has the same fare as a Metro bus and offers free transfers with ORCA.
- The app suggests the best transit options.



How to get a Driver's License?

1. Check Eligibility

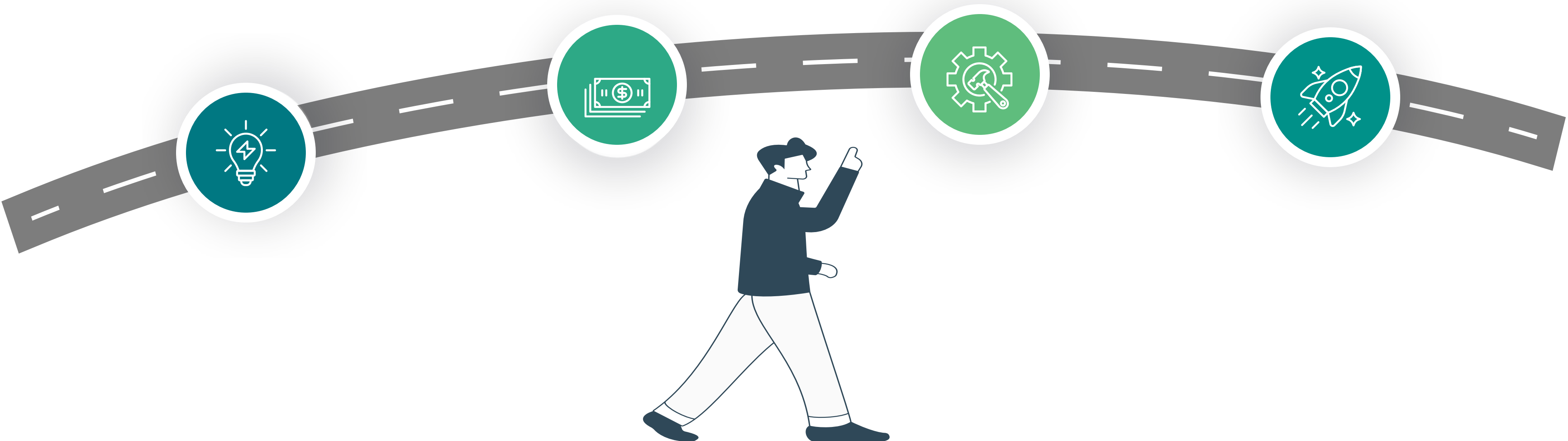
- You must be 16 or older to apply for a driver's license.
- Provide proof of residence and identity.

2. Apply for a Learner's Permit

- Pass the written knowledge test
- Complete vision screening
- Pay the application fee.

3. Schedule a Driving test

- Practice driving and become familiar with local rules.
- The driving test is available in different languages.



Driving safety tips

When pulled over by Police:

- Stay calm, turn on your signals and pull over safely and quickly as possible.
- Stop and turn off the car.
- Keep your hands visible on the steering wheel.
- Roll down the window as requested by the Officer.
- Be polite and respectful.
- Answer questions honestly, but only when asked
- Provide documents: your driver's license, vehicle registration, and proof of insurance when requested by the officer.
- You have the right to remain silent, by saying "I would like to remain silent".
- Once the officer has finished with the stop, you can leave, but do not wait for them to leave first.



Transportation Access for Immigrants in King County

1. Using Public Transit Without Documentation:

- **No ID Needed:** You don't need a government-issued ID to use buses, light rail, or ferries. Payment is made directly through ORCA cards, mobile apps, or cash.
- **Cash-Friendly Options:** If you're unable to access a bank account or payment cards, cash is accepted on buses (exact change required) and for ferry tickets.

2. Affordable Travel Options:

- **Reduced Fares:** King County Metro offers discounted fares for low-income riders, seniors, and youth through the ORCA LIFT program.
- **Community Programs:** Many immigrant support organizations, such as refugee resettlement agencies, offer free or subsidized transit passes for individuals in need.

Transportation Access for Immigrants in King County

2. Language Support:

- **Multilingual Resources:** Transit agencies provide schedules, maps, and guides in multiple languages, making it easier for non-English speakers to navigate.
- **Customer Assistance:** Many transportation staff and customer service lines are trained to offer language assistance or connect riders with interpreters.

3. Community Support for Transportation

- **Many local nonprofits** and immigrant advocacy organizations offer guidance and financial assistance for transportation. Programs such as carpooling networks, free bike shares, and rideshare vouchers may also be available.
- **Safety and Privacy: No Immigration Checks:** Public transportation services do not require or conduct immigration status checks.
- **Know Your Rights:** Be aware of your rights as an immigrant or undocumented individual in emergencies or encounters with authorities.



Multiple ways to pay for buses.



Tap inside the

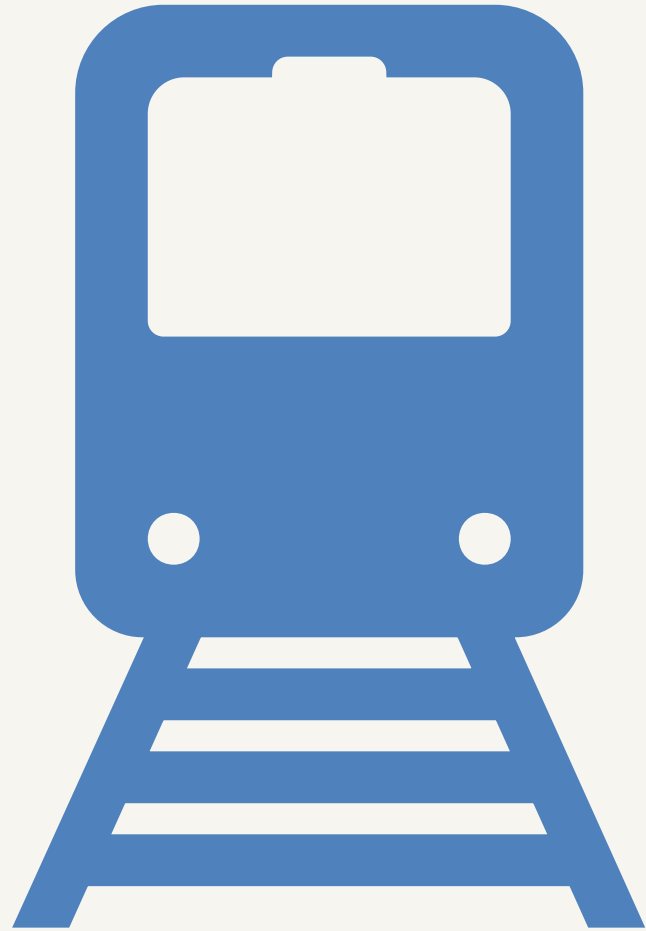


At bus or Light Rail stops, you can tap your card



Map of Seattle train and buses

Conclusion:



- The U.S. offers a wide array of transportation options, each designed to meet the needs of its diverse population and geography.
- By understanding how these systems work—from private cars and ride-shares to public buses, trains, and ferries—you can navigate effectively and make informed decisions.
- Remember, planning and preparation are key to a smooth travel experience.



King County



**PORSESH POLICY
RESEARCH INSTITUTE**
Fact-based Analysis & Solutions

Contact Number: 206-613-9926

Email Address: info@prresearch.us



@porseshresearch

**For client referrals or training requests for
your community members, please don't
hesitate to contact us.**

Additional Resources:

- How to get an ORCA card to use on buses and Trains:

<https://www.myorca.com/buy-online/>

- How to find the bus schedule

<https://kingcounty.gov/en/dept/metro/routes-and-service/schedules-and-maps>

- How to pay in Soundtransit:

<https://www.soundtransit.org/ride-with-us/how-to-pay>

- <https://kingcounty.gov/en/dept/metro/travel-options/metro-flex>

References:

- King County (n.d.) *Partnerships and Collaborations: K4C*. Available at: <https://kingcounty.gov/en/dept/executive/governance-leadership/climate-office/partnerships-collaborations/k4c> (Accessed: 26 January 2025).
- Sound Transit (n.d.) *How to pay*. Available at: <https://www.soundtransit.org/ride-with-us/how-to-pay> (Accessed: 26 January 2025).
- USAHello (n.d.) *Public transportation in the USA*. Available at: <https://usahello.org/life-in-usa/daily-life/public-transportation/> (Accessed: 26 January 2025).
- DMV.org. (n.d.). *DMV guide for drivers*. Retrieved January 26, 2025, from <https://www.dmv.org>
- **King County (n.d.)** *Partnerships and Collaborations: K4C*. Available at: <https://kingcounty.gov/en/dept/executive/governance-leadership/climate-office/partnerships-collaborations/k4c> (Accessed: 26 January 2025)

Thank You

THE END!



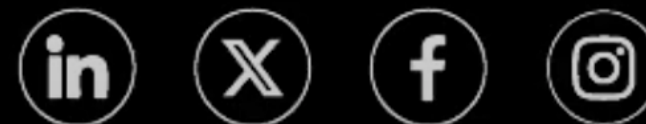
King County



**PORSESH POLICY
RESEARCH INSTITUTE**
Fact-based Analysis & Solutions

Contact Number: 206-613-9926

Email Address: info@prresearch.us



@porseshresearch